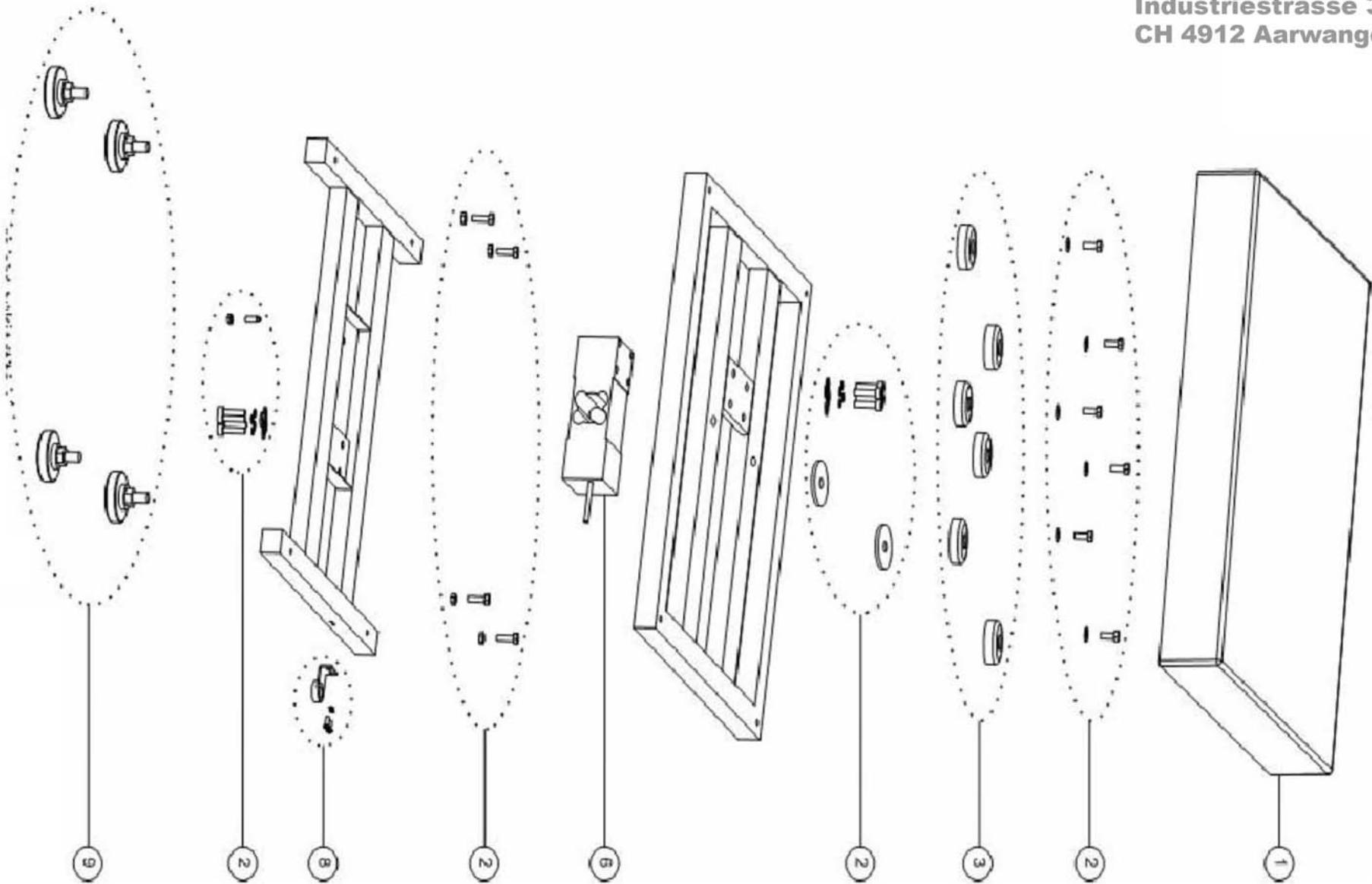


Drawing Item	Corporate Item Number	Description
1	8 7220 2170	LFT Sealing Kit
2	8 0700 0010	Function Label
3	8 7220 2158	Housing, Top
5	8 7220 2163	LCD, w/backlight
7	8 7220 2162	PCB, Main
8	8 7220 2334	Battery Bracket Kit
9	8 7219 8198	Battery, Lead Acid
10	8 7220 2159	Housing, Bottom
11	8 7220 2178	Knobs (set of 2)
12	8 8025 1747	Accessory, Wall Mount Kit, Painted
13	8 7221 5231	Feet, Set of 4
14	8 7220 2333	Cable Kit, (4Cables)
18	8 7222 2490	I/O Fitting, M16, 16mm Hole
18	8 7120 9064	I/O Fittings (2), PG7, 13mm Hole
19	8 7120 9069	Cable Mounts, Internal
20	8 7220 2329	Hardware Kit
80	8 3000 0010	Adapter, EU, 230V
	8 8025 0475	Complete Indicator

MA 60/150 E/G-1

Datum: 05.09.2011



Drawing Item	Corporate Item Number	Description
1	8 7220 2176	Pin
2	8 7220 2335	Hardware Kit, SS parts
3	8 7220 2198	Rubber Load Pads (set of 6)
6	8 7220 2202	Loadcell
8	8 7220 2203	Level Kit
9	8 7112 5009	Foot, (CQ12x12,18x18)
	8 8025 0542	Complete Base